



CASE STUDY

Fire Water Pond Lining - LLDPE Geomembrane



▼ **LOCATION:** Winnipeg, Manitoba (CentrePort Canada)

▼ **PROJECT TYPE:** Product Supply and Installation

▼ **PRODUCT USED:** LLDPE Geomembrane

▼ **PROBLEM:**

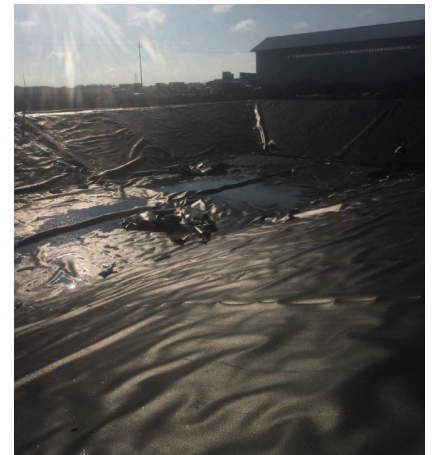
An emergency fire water pond was required for CentrePort Canada, the largest trimodal inland port and Foreign Trade Zone in North America located in Winnipeg. These fire ponds are required for water containment, providing fire fighting response teams with convenient water access to fill fire trucks.

▼ **THE TITAN SOLUTION:**

Titan supplied and installed a total of 24,983 sq. f (2,321 m²) of 60mil LLDPE Geomembrane. This material is the ideal liner for a leakproof fire pond because of its high-quality, exceptional strength, durability and long lifespan .

▼ **ACHIEVEMENT:**

Titan set a new benchmark for speed and accuracy in pond construction by completing the installation process in just one day, demonstrating our extraordinary efficiency. In addition to demonstrating Titan's unmatched experience, this accelerated schedule made sure the pond was operating in record time, meeting deadlines, and outperforming expectations with incredible efficiency.



Contact us for more information:

TITAN ENVIRONMENTAL CONTAINMENT

Toll free: 1-866-327-1957 | Email: info@titanenviro.com | Web: TitanEnviro.com

TRUST.QUALITY.VALUE