



# CASE STUDY

## Wastewater Lagoon Cells: HDPE Geomembrane

**LOCATION:** Alberta, Canada

**PROJECT TYPE:** Product Supply & Installation

**PRODUCT USED:** 60-mil HDPE, TE-6



### CHALLENGE:

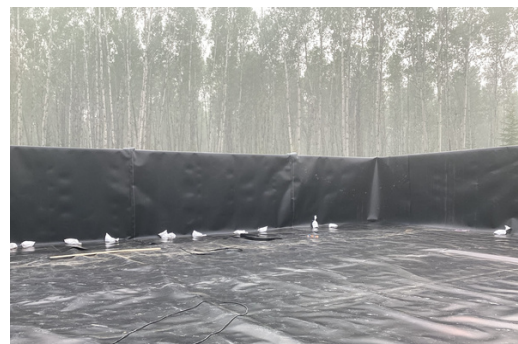
A Northern Alberta community required a new wastewater treatment facility to meet current and future wastewater treatment needs. The project included the construction of a new Aerated Lagoon and SAGR cell.

### TITAN SOLUTION:

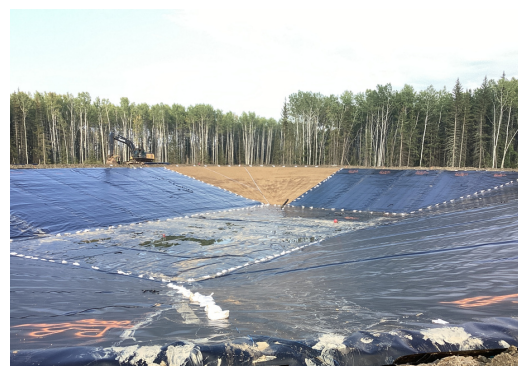
Titan provided and installed the geosynthetic lining system for both the SAGR cell and the Aerated Lagoon. The SAGR cell utilized a 60 mil HDPE liner, covering a total area of 31,215ft<sup>2</sup> (or 2,900m<sup>2</sup>), along with a geotextile covering an area of 54,250ft<sup>2</sup> (or 5039m<sup>2</sup>). As for the Aerated Lagoon, it was constructed using a 60-mil HDPE liner that covered an area of 83,958ft<sup>2</sup> (or 7,800m<sup>2</sup>), with a total area of 96,336 ft<sup>2</sup> (or 8,950m<sup>2</sup>) covered by the geotextile. The Aerated Lagoon also incorporated a wick drain system to assist with gas venting.

### ACHIEVEMENT:

As a leader in the geosynthetics industry, Titan provided the most low-impact and cost-effective solution for the project. The material arrived on schedule, and our crews installed it efficiently and to industry quality standards.



SAGR Cell



Aerated Cell