



CASE STUDY

Landfill Containment -- Multi-layer Lining System

LOCATION: Conklin, AB

PROJECT TYPE: Product Supply & Installation

PRODUCT USED: GCL, Geocomposite, 60 mil HDPE



CHALLENGE:

A company specializing in natural gas, crude, and oil sands needed a new active landfill cell constructed to dispose of liquid waste on a well-known landfill site.

TITAN SOLUTION:

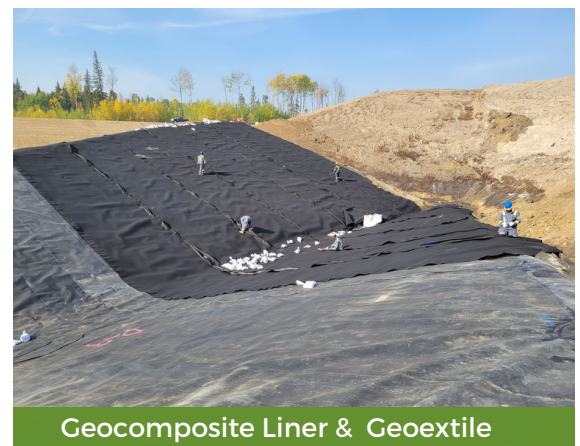
Titan proposed a multi-layer design for an environmentally friendly landfill containment that would help prevent leachate garbage from escaping and eliminate soil contamination. Geosynthetic Clay Liner (GCL) was selected as the ideal solution for this project because of its unique bentonite self-sealing attributes and ability to reduce the risk of punctures and leakages; A flexible plastic geocomposites membrane liner along with geotextile was used to help seal the base of the hole and assist in filtering sediment. The most chemically resistant geomembrane, HDPE 60 mil, was used as the third layer in this system

ACHIEVEMENT:

Titan supplied and installed 329,182ft² (30,582m²) of GCL, 329,182ft² (30,582m²) of geocomposite, 329,182ft² (30,582m²) of HDPE 60 mil DST, and 67,489ft² (6,270m²) of geotextile. With our strict safety and production requirements, we completed this work on budget and on time.



GCL



Geocomposite Liner & Geotextile