

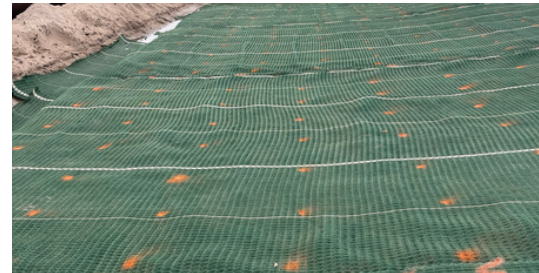


CASE STUDY

Mine Tailings Dam Slope - ARMORMAX® SYSTEM



- ▼ **LOCATION:** Wood Buffalo, Alberta
- ▼ **PROJECT TYPE:** Product Supply and Installation
- ▼ **PRODUCT USED:** Armormax® System



▼ **PROBLEM:**

The slopes on a mine tailings dam were prone to wave erosion and a high performing erosion control solution was needed.

▼ **THE TITAN SOLUTION:**

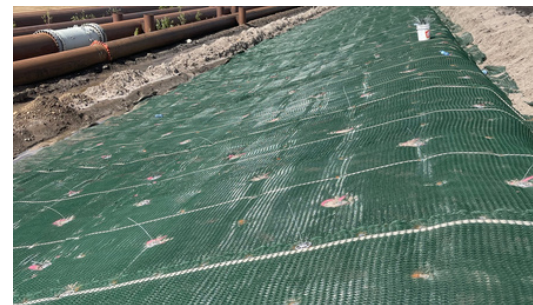
Initially, the client planned to plan to use Rip Rap Rock or an alternate turf reinforcement but considering performance needs, Titan proposed the ARMORMAX® system, a more robust and longer lasting solution.

This soft armour vegetative system is comprised of PYRAMAT®, a high-performance turf reinforcement mat, made of woven polypropylene geotextile fixated with Engineered Earth Anchors providing superior slope stability.



▼ **ACHIEVEMENT:**

Titan supplied and installed 256,181 SF of ARMORMAX® with an 8-person crew, completing the job efficiently and to customer satisfaction.



Contact us for more information:

TITAN ENVIRONMENTAL CONTAINMENT

Toll free: 1-866-327-1957 | Email: info@titanenviro.com | Web: www.titanenviro.com

TRUST.QUALITY.VALUE