

# CASE STUDY

## Brentwood Stormwater Modular Tank System

**LOCATION:** Regina, Saskatchewan

**PROJECT TYPE:** Pre-design & Supply

**PRODUCT USED:** Brentwood Stormwater Modular Tank System & TE-6oz Nonwoven Geotextile



### ▼ CHALLENGE:

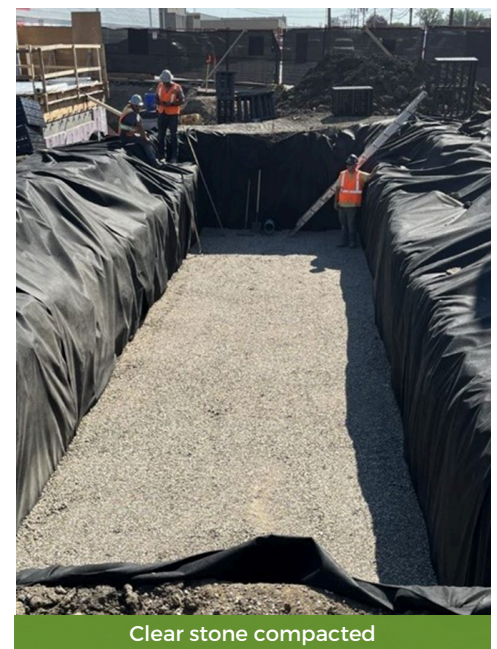
A car dealership encountered substantial challenges in effectively managing stormwater on its site. The original plan involved the installation of two large CSP (corrugated steel pipe) culverts, which proved to be both expensive and demanding in terms of specialized equipment and extensive excavation. The dealership sought a more cost-effective and efficient solution to manage stormwater, without sacrificing the quality and durability of the containment system.

### ▼ SOLUTION:

The consulting engineering firm, considered an alternative proposed by Titan using Brentwood modules. This pre-design, completed within hours of the request, showcased significant cost savings and practical advantages.

The Brentwood modules were more affordable and easier to install without heavy equipment. The Titan team quickly assembled 180 modules. The contractor then enclosed the modules in TE-6 nonwoven geotextile, surrounded them with fractured clear stone to enhance water capacity and stability, and installed and enclosed the space.

This innovative approach ensured efficient stormwater management while minimizing labor and installation costs. Titan also provided on-site assistance, ensuring the process went smoothly and efficiently.



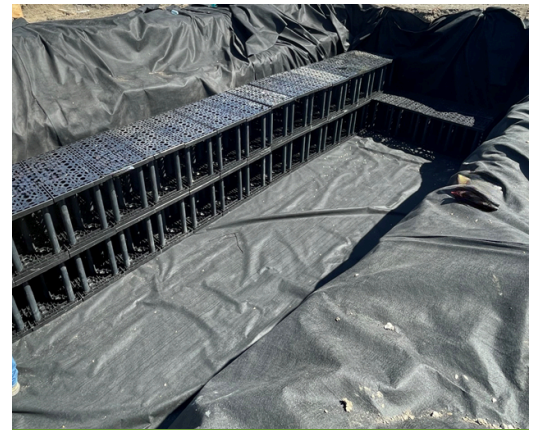


# CASE STUDY

## Brentwood Stormwater Modular Tank System

### ACHIEVEMENT

The project was a groundbreaking success in Saskatchewan, with the Brentwood Stormwater system selected for its many advantages. The entire installation, including excavation and final grading, was finished in just three days. This approach saved the dealership \$16,000 compared to the original CSP design and provided a durable, low-maintenance system. The collaboration between Titan, WCE Design, and Barbour Excavating ensured a well-executed project, delivering a dependable stormwater management system for the dealership.



Start of installation



Modules being installed



Completed module installation