



CASE STUDY

StormTank® - Modular Underground Stormwater Management System



- ▼ **LOCATION:** Renton, Ontario
- ▼ **PROJECT TYPE:** Supply only
- ▼ **PRODUCT USED:** StormTank® & TE-6 Non-woven Geotextile



▼ **PROBLEM:**

An outdoor storage bin facility in Renton, ON, required a stormwater management system to help maximize its water resources by aiding with infiltration.

▼ **THE TITAN SOLUTION:**

When a contractor contacted Titan to help with a pre-design for a stormwater management system, our engineering and technical team knew the best option for this client would be the StormTank® Module 25 Series. Originally slated to use an arch chamber system, the StormTank® modular tank system was highlighted due to its capacity to use less material and handle all Ministry of Transport Storm events, including its 100-year storm requirements. With water infiltration management at the core of this design specification, the system met volume requirements of 212.60 m³, and the Debris Rows provided 95% TSS removal.

▼ **TECHNICAL HIGHLIGHTS:**

The conveyance of run-off is directed to the underground StormTank®. This system comprises 462 modules, each 914 mm in height, and surrounded by 300 mm of stone above and around the perimeter of the system, with stone bed below to aid in the infiltration of water to the underlying native soil.



Contact us for more information:

TITAN ENVIRONMENTAL CONTAINMENT

Toll free: 1-866-327-1957 | Email: info@titanenviro.com | Web: www.titanenviro.com

TRUST.QUALITY.VALUE



CASE STUDY

StormTank® - Modular Underground Stormwater Management System

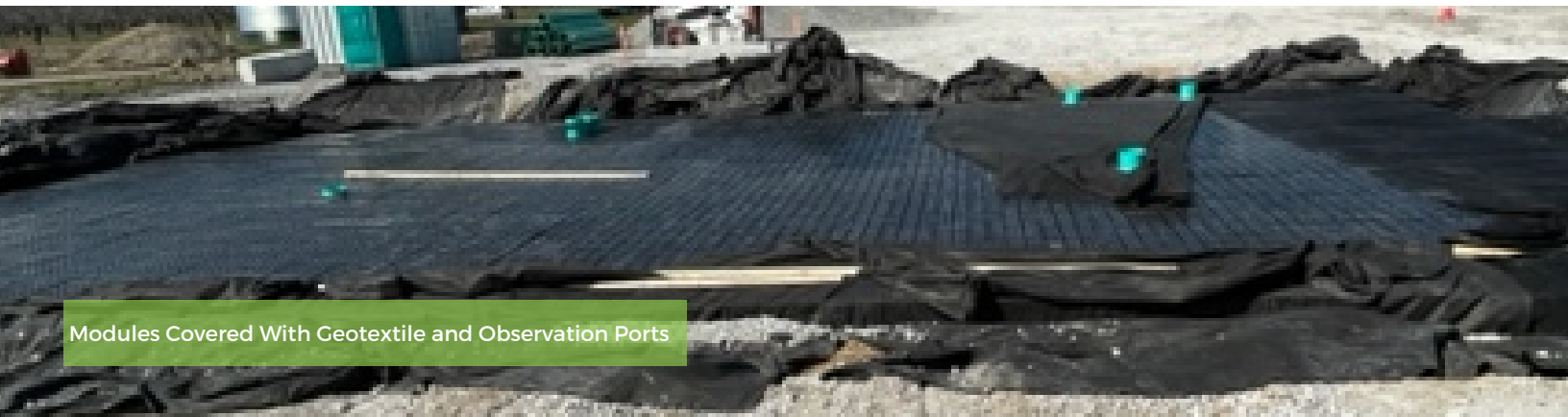


▼ TECHNICAL HIGHLIGHTS CONT'D:

Upon entering the system, the water is subjected to treatment by a debris row, which is composed of a row of modules located at the inlets and enclosed by side panels and filter fabric. This area serves as a detention basin, allowing water to pass through while sediment is trapped within. The system is equipped with six observation ports, two located in each of the debris rows and two in the middle of the system, which facilitate inspection and maintenance of the system by vacuum truck for sediment removal.

▼ ACHIEVEMENT:

Our client was satisfied with the quality of the product supplied and our team's lead times, which supported the delivery of the products within the customers' ideal timeframe.



Modules Covered With Geotextile and Observation Ports

Contact us for more information:

TITAN ENVIRONMENTAL CONTAINMENT

Toll free: 1-866-327-1957 | Email: info@titanenviro.com | Web: www.titanenviro.com

TRUST.QUALITY.VALUE